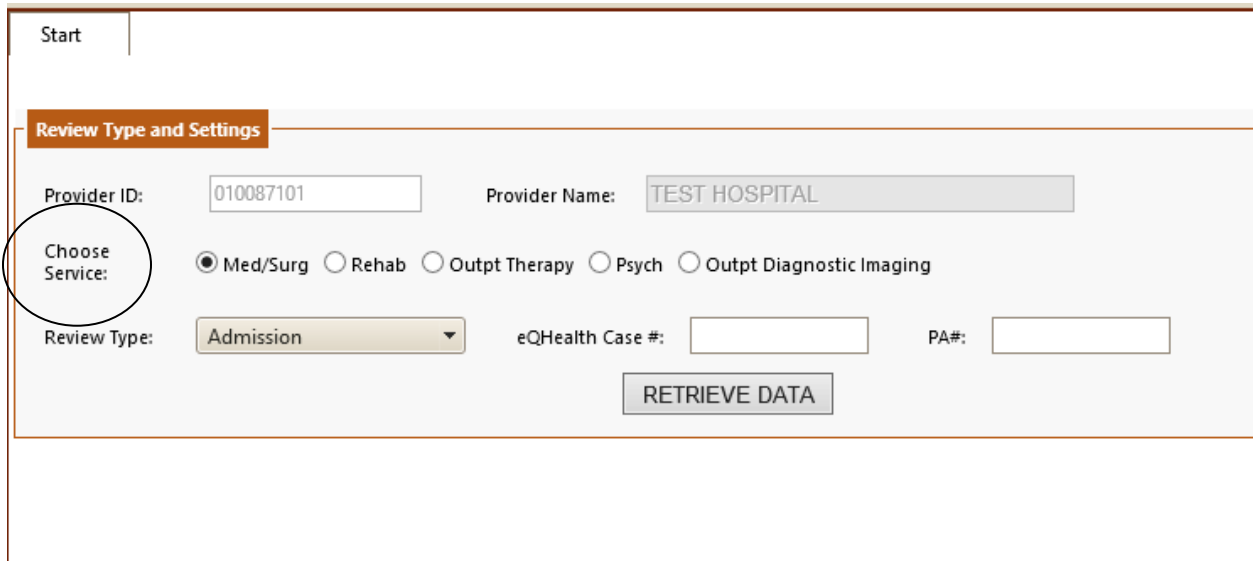


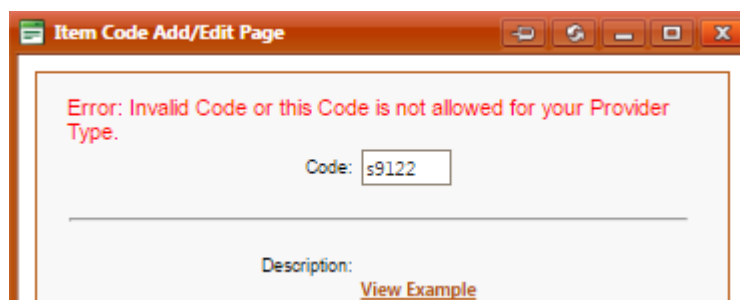
## Selecting the Correct Service Type

When creating a new review. You will need to make sure you select the correct service type for your request.



If you enter a CPT/Procedure code that does not pertain to the service type you selected you will get an *Invalid Code, or this code is not allowed for your provider type*

Example: If you choose service “Med/Surg” but you enter an Imaging CPT code, you will get an error message.



**Service Settings Examples:**

- ▶ Physician Procedures: These are all outpatient surgical procedures on our Multispecialty list. You can find the list of codes that require prior authorization on our provider website [fl.eqhs.org](http://fl.eqhs.org)
- ▶ Med/Surg: You will select this option for all inpatient requests
- ▶ Outpatient Diagnostic Imaging: All imaging requests
- ▶ Home Health: Home Health Services
- ▶ PCS: Personal Care Services

