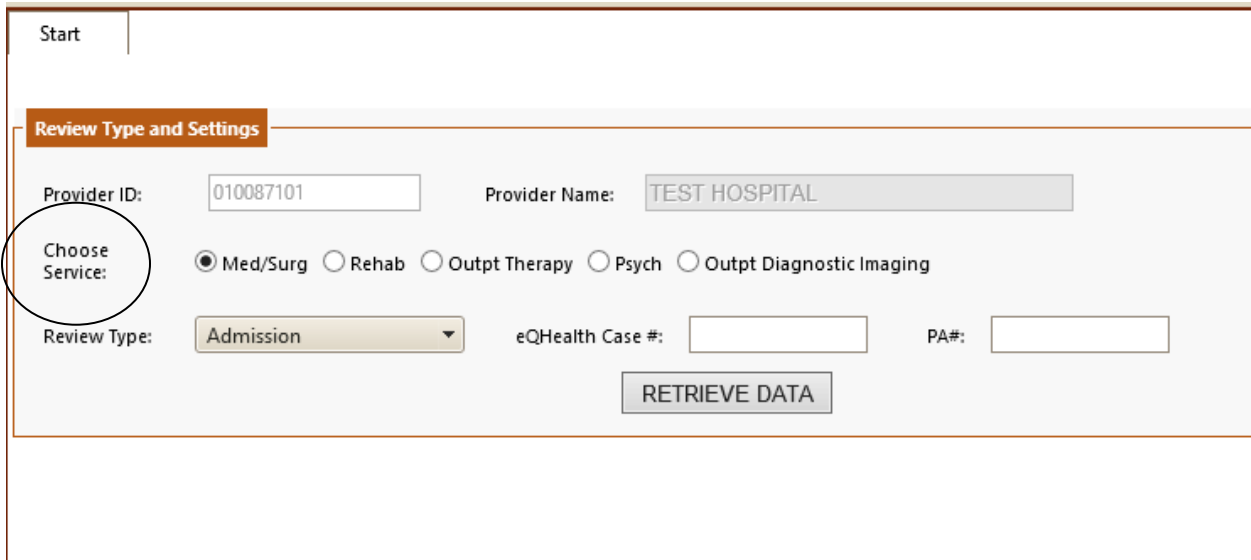


Selecting the Correct Service Type

When creating a new review. You will need to make sure you select the correct service type for your request.



Start

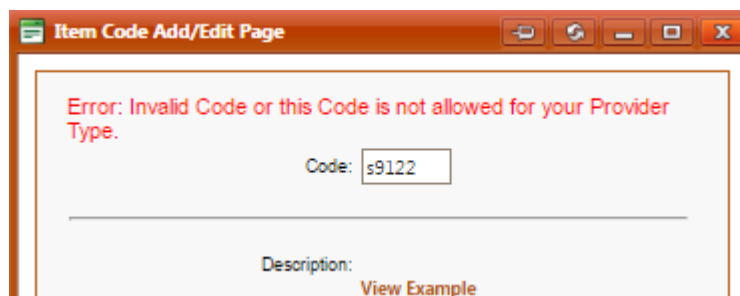
Review Type and Settings

Provider ID: 010087101 Provider Name: TEST HOSPITAL

Choose Service: Med/Surg Rehab Outpt Therapy Psych Outpt Diagnostic Imaging

Review Type: Admission eQHealth Case #: PA#: [RETRIEVE DATA](#)

If you enter a CPT/Procedure code that does not pertain to the service type you selected you will get an *Invalid Code, or this code is not allowed for your provider type*



Example Service Types:

Med/Surg: You will select this option for all inpatient requests

Physician Procedures: These are all outpatient services on our Multispecialty list. You can find the list of codes that require prior authorization on our provider website fl.eqhs.org

Outpatient Diagnostic Imaging: All imaging requests

