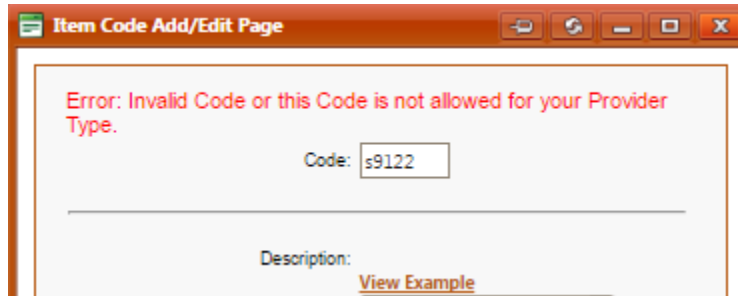



S9122 Error

“Not Allowed for your Provider Type”

When creating a new PCS review. You will be required to use code S9122 and select the correct service type. If you get the below error message.



Click on the Start Tab and confirm what service you have selected. If you have selected any other service aside from PCS you will get the error message *Invalid Code, or this code is not allowed for your provider type.*



The screenshot shows a web application interface with a "Review Header Information" section at the top, containing "Provider #: 888899999" and "Provider Name: HHprovider". Below this is a "Start" tab. The main section is titled "Review Type and Settings" and contains the following fields and options:

- Provider ID: 888899999
- Provider Name: HHprovider
- Choose Service: Home Health, PDN/PCS, Outpt Therapy
- Specify Type: PDN, PCS (with an arrow pointing to it)
- I attest that A) this recipient has received therapy services prior to 11/1/11 and a signed and dated plan of care that covers the requested dates of services is on file OR B) th
- Review Type: Admission (dropdown menu)
- eQHealth Case #: [input field]
- PA#: [input field]
- RETRIEVE DATA (button)